

Tackley's Inn, Oxford

by W. A. PANTIN

TWO houses on the south side of the High Street, No. 106 (the Oriel Restaurant) and No. 107 (Messrs. Bradbury and Venables, tailors), originally formed one large tenement known as Tackley's Inn.¹ This building is of the greatest architectural and historical interest. It is important architecturally, for it contains what is probably the finest domestic crypt or vaulted cellar in Oxford, a good 15th century roof, and a good, though mutilated, 14th century window. Oxford is rich in late 16th and 17th century houses, but, outside the colleges, surviving specimens of medieval domestic architecture are very rare. Historically, this building represents an even greater rarity; it is one of the very few examples of a medieval academic hall still surviving sufficiently for us to be able to trace its plan and arrangements. It should be remembered that until the 16th century almost all undergraduates and most graduates lived, not in colleges, but in these academic halls, which were scattered over Oxford; it is therefore a building like Tackley's Inn which enables us to see under what conditions the average medieval student lived and worked. Finally, for the history of Oriel College it has a very special importance; it was the first piece of property that Adam de Brome acquired when he began to found the college; in it he housed, or at least intended to house, the first 'scholars' (*i.e.* Fellows) of his foundation, before the college was refounded by Edward II and transferred to the present site. At a time when every building is in danger of a sudden and violent death, it seems specially desirable to scrutinize and record the history of Tackley's Inn.

Tackley's Inn was built about 1320 (it is described as newly built in 1324) by Roger le Mareschal, parson of Tackley (near Woodstock).² Clerical landlords of this type had been a marked feature of Oxford in the 13th century, when we find clergy beneficed in the locality, such as the parsons of Charlbury, Elsfeld, Marsh Gibbon, and Woodperry, owning houses which became academic halls.³ It is not clear whether Roger le Mareschal had built Tackley's Inn merely as a speculation, to lease out to some graduate principal, or whether he intended

¹ This article has been reprinted, with minor alterations, from the *Oriel Record*, June 1941, pp. 139 ff.

² For the deeds and leases concerning Tackley's Inn, see C. L. Shadwell and H. E. Salter, *Oriel College Records* (O.H.S., LXXXV), pp. 163-9.

³ Cf. A. B. Emden, *An Oxford Hall in Medieval Times*, pp. 56-7.

TACKLEY'S INN, OXFORD

himself to take in students to board. In 1324 the inn was acquired from him by Adam de Brome as a home for the scholars of the 'house of Blessed Mary in Oxford' which he was founding. As originally built, the inn consisted of two distinct parts, north and south; (i) to the north, adjoining the street, a row of five shops, with five solars above and a cellar of five bays below, all leased to laymen; and (ii) at the back of these, to the south, and reached by a passage or 'entry' between the shops, a hall and inner chambers, let to scholars of the University, 'to inhabit after the manner of scholars.' The scholars of Adam de Brome's foundation presumably inhabited the southern part until 1329, when they acquired possession of the house called La Oriole, on the site of the present college, to which they migrated.¹ If we picture the scholars in those first years living in a few chambers at the back of Tackley's Inn, we can readily see how natural and appropriate was the homely title that Adam gave to his foundation, *Domus Beatae Mariae*. A college did not necessarily need elaborate buildings on a collegiate plan: what distinguished a college from an academic hall was rather the possession of certain juridical privileges, endowments, a common seal, and so forth.

In 1363 the College rental shows that the southern part or hall was let at a rent of £4 13s. 4d. to a certain canon, perhaps as an academic hall for Augustinian canons;² as to the northern part on the street, the vaulted cellar under the shops is let out at 13s. 4d. as a tavern or wine vault, together with one of the shops, probably the easternmost at 10s.; the second shop (going westwards?) is let to Agnes Latoner (*i.e.* a maker or seller of metal-ware, candlesticks, and the like); the third and fourth to William Tapermaker at the rate of 10s. a shop; and the fifth to Roger Grasier—his trade is not so obvious—at 12s.³

There seems to be no more evidence about Tackley's Inn until towards the middle of the 15th century; and by this time, instead of being divided into a northern and a southern portion, it is now divided by the entry into an eastern and a western half. The western half was Tackley's Inn proper and came also to be known as Buckley Hall; it was used as an academic hall. It consisted of the dining-hall of Tackley's Inn and the three westernmost shops on the street side, though it is not clear whether these were still used as shops. The eastern half was known as the tavern, the college tavern, *taberna nostra* in the college accounts. It must have consisted of the eastern chamber at the back and what had been

¹ *Oriel College Records*, pp. 114 ff. They may have moved temporarily into St. Mary's Hall after 1326; *ibid.*, pp. 3 n., 12.

² The Augustinian general chapter in 1356 had ordered the students of the Order at the University to live together; they had no college of their own until the 15th century; H. E. Salter, *Triennial Chapters of the Augustinian Canons* (O.H.S., LXXIV), pp. xxvi, xxxi ff.

³ *Oriel College Records*, p. 382.

the two easternmost shops in front, together with the whole of the cellar, which extended under Tackley's Inn as well as under the tavern; it was in fact this wine cellar which no doubt gave its name to the tavern. This east and west division already existed in 1442, when the western (Tackley's Inn) was handed over or farmed out to the city, while the eastern (the tavern) was kept in the hands of the college.¹ The western half, Tackley's Inn or Buckley Hall, appears in the Chancellor's register as an academic hall; at times its Principal was a Fellow of Oriel; for instance, in 1436 Thomas Wyche, in 1461 John Springbett, in 1462 Robert Sheffield. In much the same way we find at this time Fellows of the college as Principals of other halls belonging to Oriel, such as St. Mary Hall, Bedel Hall, and Martin Hall.² But much the most important tenant or Principal of the hall at this time was Master Richard Bulkeley, or Buckley, who held the hall from 1438 to 1453; it was this long tenancy that caused the hall to be known henceforward as Buckley Hall. Richard Bulkeley introduces us to an interesting but rather obscure subject, namely, the teaching of grammar in the medieval University; he was one of the grammar masters recognized by the University, and his hall was one of the five grammar halls known to have been existing in the middle of the 15th century. Such a hall was not occupied by graduates or undergraduates, like the halls of Legists and Artists, but by school-boys who were, as Dr. H. E. Salter suggests, no doubt 'packed closely, sleeping probably two in a bed, like the boys at Winchester, and with scanty food.' These grammar halls disappeared towards the end of the 15th century, perhaps owing to the rise of free grammar schools like Magdalen College School.³ In 1491 Tackley's Inn (*i.e.* Buckley Hall) was occupied by one Nicasius Arnold.⁴

As regards the eastern half, or tavern, the succession of its tenants can be traced from the college accounts from 1451 onwards: Robert Sadeler (1451-2), Henry Taverner (1452-3), William Taylor (1456-60?), then the comparatively long tenancies of John Myllen and Lettice his wife (1460-83) and of Master William Lynch and Mistress Lettice his wife (1483-1503), then John Doo (1503-7), Master Bentley (1507-15), and John Page (1515-20).⁵ In some cases it seems to be the wife who carries on the business, and perhaps Mistress Myllen and Mistress Lynch were the Oxford equivalents of Mistress Quickly. Master Lynch, however, if he did in fact keep the tavern himself, must have been

¹ *Oriel College Records*, pp. 308-9.

² H. E. Salter, *Registrum Cancellarii*, 1 (O.H.S., xciii), pp. 21, 40, 102, 124, 133, 216, 249, 286, 339; II, 55, 88; A. Clark, *Wood's City of Oxford*, 1 (O.H.S., xv), pp. 589, 595, 600.

³ H. E. Salter, *Mediaeval Archives of the University of Oxford*, 1 (O.H.S. Lxx), pp. 278-80; *Essays in History pres. to R. L. Poole*, pp. 433-4.

⁴ *Oriel College Records*, p. 403.

⁵ These and the following references to the College accounts are taken from the MS. Treasurers' Accounts, vols. II-IV.

TACKLEY'S INN, OXFORD

an unusual type of tavern-keeper, for he was a former Fellow of Oriel (c. 1477-81) and later physician to the King; he gave to the college the adjoining tenement, No. 105, High Street. No doubt he had vacated his Fellowship on marriage; one is reminded of the entry in the contemporary Merton register about two Fellows who were promoted, the one to a beautiful benefice, the other to a beautiful wife.

The rent of the tavern gradually rose. In 1451-3 it was £2 6s. 8d.; it then sinks slightly (perhaps on account of bad repair) to £2 between 1460 and 1480; then in 1480-1 it is raised to £3 on account of repairs and improvements (*pro taberna nostra . . . in reparacionibus ampliata*), and the rent remains normally £3 3s. 4d. from about 1483 right down to the 17th century. This steady rise in value of the tavern is interesting, because in general house-property in Oxford was falling into decay in the 15th and early 16th centuries, and many tenements were becoming garden plots. Oriel College itself in this period was coming to rely less and less on its house property and more and more on the land it was acquiring. But no doubt a well-placed tavern, fulfilling as it does one of the primary needs of man, is always a good investment. That the tenement was a wine tavern in actual use as well as in name can be seen from the fact that in 1460-1 a former tenant was made an 'allowance' for wine; presumably this meant that his stock of wine was taken over by the College and its value deducted from his arrears of rent due.

This was perhaps not the only tavern or inn that the College possessed, for the two College properties known as the 'Swan-on-the-Hoop' (Nos. 109 and 110, High Street) and the Boar's Head (Nos. 111 and 112, High Street) may have been used as such in medieval period—the former was certainly an inn by the 16th century. But it was this tenement that was the college tavern par excellence, *taberna nostra*. It might perhaps be compared to the *Stiftskeller* of an Austrian monastery. It is at any rate clear that the tavern was sometimes used by the college, in a semi-official way, as a place for entertainment and hospitality. It should be remembered that during the Middle Ages it was the custom to settle legal and business transactions, such as the receiving of rent or the settling of a contract, with drinks, and consequently the expenses of these entertainments appear regularly in the College accounts under a special heading: *Soluta pro potationibus*. Thus in 1511-12, when the adjoining tenement (No. 105, High Street) was acquired, 2d. was spent *pro potacione cum parochianis in introitu nostro in domum quondam magistri Lynche*, and again 4d. was spent *in faciendo pactum cum Roberto Carrow pro edificacione aule de Bucley*. (Carrow was a carpenter, who was bailiff of the city in 1516 and 1526). Sometimes these entertainments took place in the tavern; when an important tenant, Master Unton (whose family leased the college estate of Wadley near Faringdon

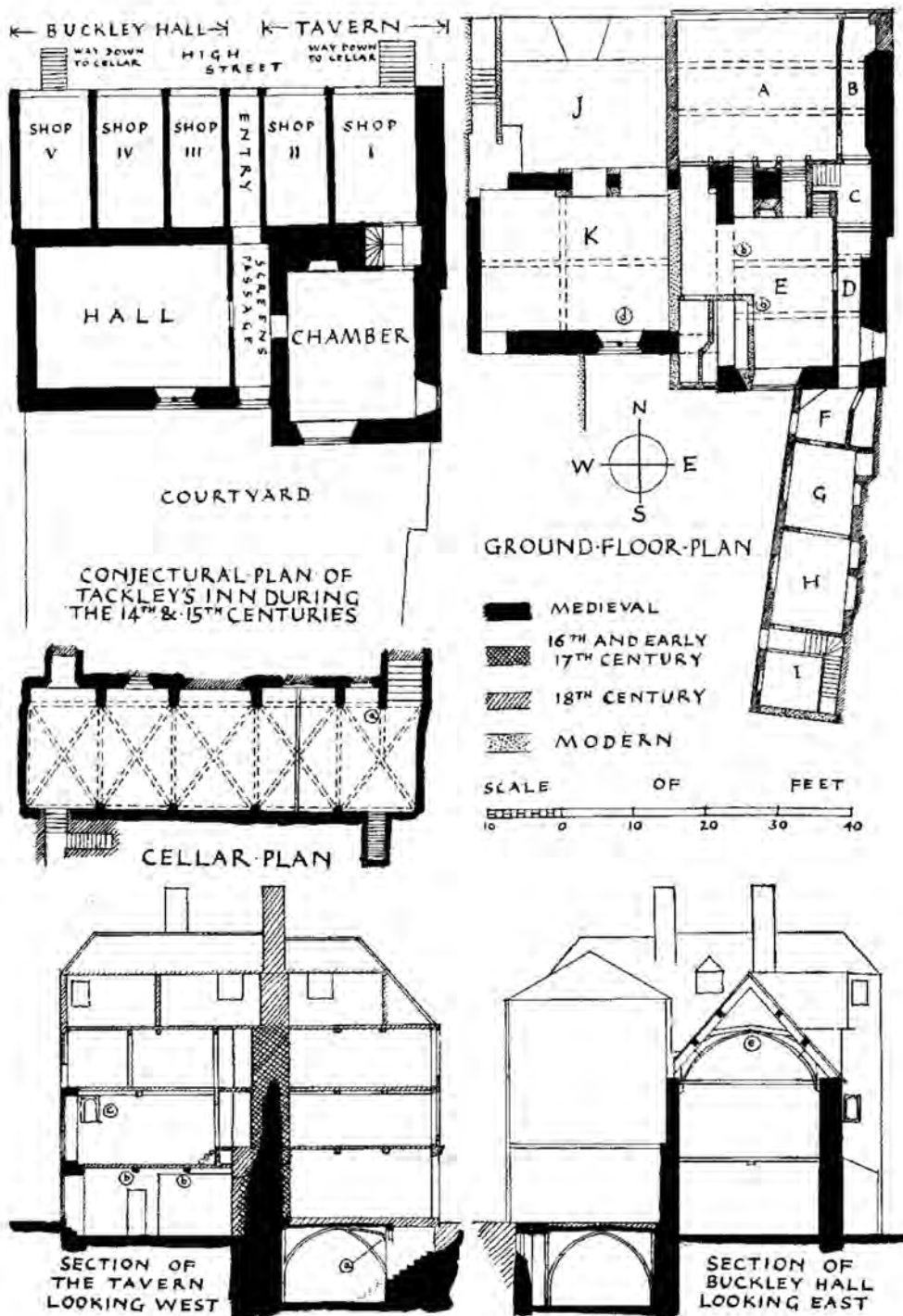


FIG. 21.
TACKLEY'S INN, HIGH STREET, OXFORD : plans and sections.

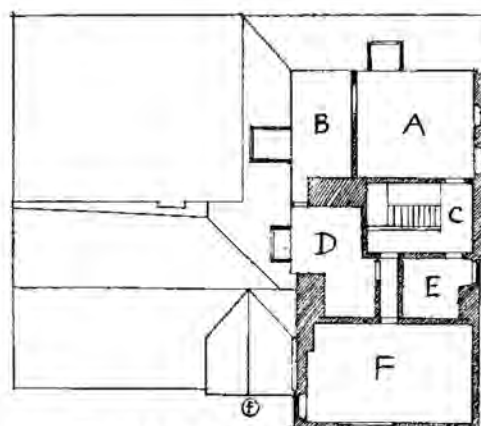
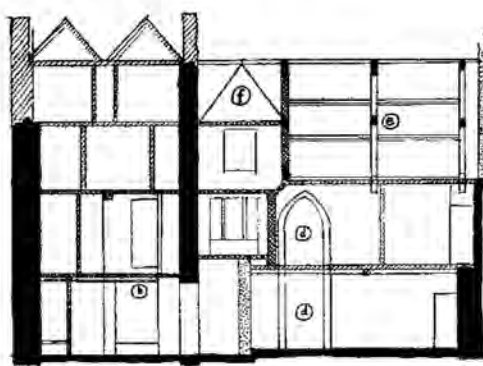
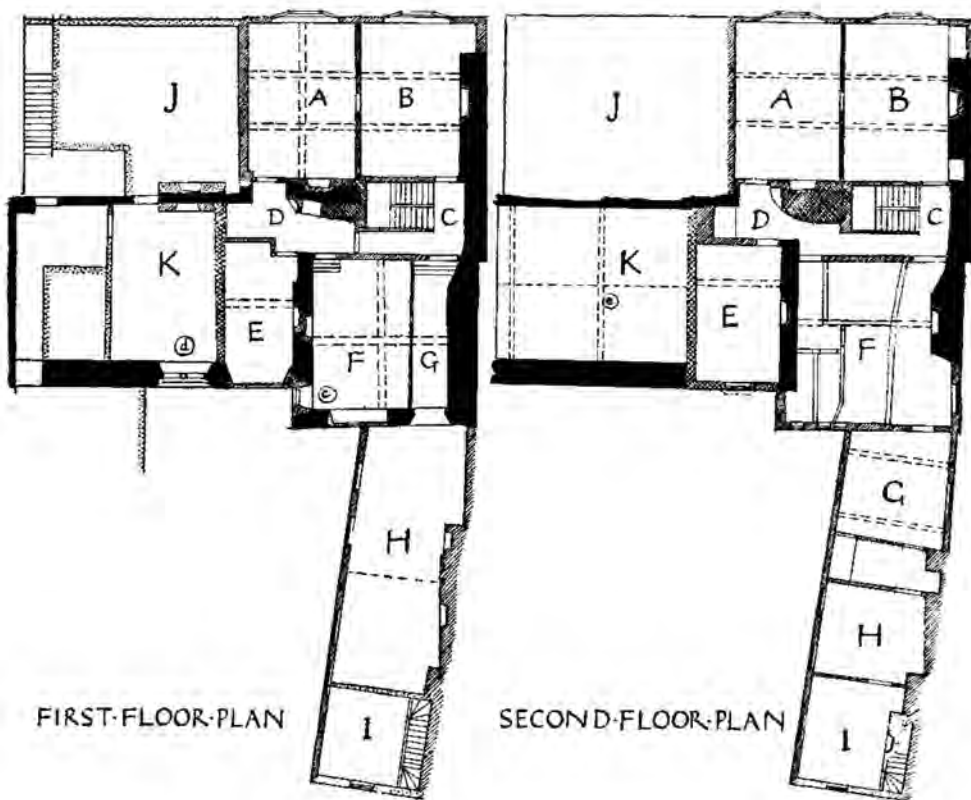


FIG. 22.
TACKLEY'S INN, HIGH STREET, OXFORD : plans and sections.

for two hundred years),¹ came over to Oxford in Lent 1516, no doubt to pay his rent, he put up for two days at the college tavern, and the comparatively large sum of 1s. 8d. was spent, *potando cum magistro Unton apud tabernam nostram in quadragesima permanenti per duos dies*. In the same way, when we read of drinks and a breakfast *apud magistrum Bentley* (1513-4 and 1514-5), and a dinner for Master Unton's wife and servants and wine for Master Unton *in domo Page* (1516-7), the entries probably refer to the tavern. On other occasions the potations took place at another neighbouring college inn, *ad signum signi*, at the Swan-on-the-Hoop.

Later on, first Buckley Hall, and then both the tenements, were leased to Garbrand Harkes and his family for over a hundred years (1549-1677). Garbrand Harkes is an interesting figure—a Dutch bookseller, a protestant refugee, who set up business in Oxford by 1539 (thus following in the tradition of earlier foreign booksellers in Oxford, like the famous John Dorne). According to Wood, he was active in rescuing medieval manuscripts from destruction in the time of Edward VI's commissioners—manuscripts *ex officina Gerbrandi bibliopolae* are certainly cited by John Bale in his *Index Britanniae Scriptorum*—and in the reign of Mary his house, Buckley Hall, was a 'receptacle for the chiefest Protestants,' who worshipped in the cellar. In the reign of Elizabeth he combined the business of bookseller and wineseller, and he founded a highly successful family, most of his numerous sons and grandsons becoming booksellers, dons, and prebendaries. He was succeeded in business by his son Richard (c. 1573-90) and his grandson John (Fellow of New College 1606, bookseller, d. 1618).²

At the time of the Hearth Tax of 1665 and the Poll Tax of 1667, the tavern has eight fireplaces, and is occupied by an apothecary named William Taylor, his wife, four children, a servant and an apprentice. The western half, Buckley Hall, has now shrunk in accommodation and has only two fireplaces, and is occupied by a bookseller or stationer named Thomas Bowman, his wife, a servant, and a Mr James Mercer, probably a lodger. According to the Window Tax returns of 1696, Buckley Hall, now occupied by William Puffett, coffee-man, had ten or more windows, while the tavern had less than ten. This discrepancy with the Hearth Tax data might be explained if the windows of the tavern were larger but fewer than those of Buckley Hall.³

¹ Cf. J. G. Nichols, *The Unton Inventories*, pp. xx1 ff.

² For Garbrand Harkes and his family, see *D.N.B.*, s.v. John Garbrand; Madan, *Oxford Books*, I, 274, 276; II, 510.

³ H. E. Salter, *Surveys and Tokens* (O.H.S., LXXV), pp. 204-5, 235; M. G. Hobson, *Oxford Council Acts, 1666-1701* (O.H.S. n.s. II), p. 366. For Thomas Bowman, cf. Madan, *op. cit.*, III, 358.

TACKLEY'S INN, OXFORD

It now remains to examine the structure of Tackley's Inn, and the developments and alterations which it has undergone. I have already pointed out that as originally built, it consisted of two distinct parts, the fringe of shops to the north, and the academic hall itself to the south.

(i) In the northern part there were five shops, each having a solar or upper room. Of these shops or solars nothing now remains, but each shop must have been about 10 or 11 ft. wide (the second and third shops rather less, on account of the passage or 'entry' running between them) and about 20 ft. long. These were quite handsome dimensions, as medieval Oxford shops went, for there were some shops in the town only 6 ft. wide: as Dr. Salter has pointed out, a medieval shop was a workshop, not a store. It was of course always possible to combine two shops, as did the taper-maker in 1363 (p. 81). Below the five shops was the magnificent vaulted cellar which still survives, almost perfect. It is about 54 ft. long by about 14 ft. wide (excluding the recesses on the northern side); it has a vault of five bays, each bay being quadripartite, except for the easternmost bay, where there is an extra rib from the crown of the vault to a carved bracket in the middle of the north side of the bay ((a) in plan and section, FIG. 21, *cf.* PL. VII), this arrangement being necessary to allow headroom for the doorway leading up to the street in the north-east corner. The height from the floor to the crown of the vault is about $9\frac{1}{2}$ ft.; the vaulting shafts spring at about $2\frac{3}{4}$ ft. from the ground, but there are no capitals, the vaulting shafts running straight down to the ground to form clustered pilasters on either side. The two westernmost bays are about 10 ft. wide, and the three eastern ones about 11 ft. wide. There were originally two entrances from the street on the north: one already mentioned is in the extreme north-east corner, with its flight of steps up to the street still remaining; there are marks in the jambs of hinges for some sort of door or gate at the foot of the stairs, but there must also have been a trap-door or cover to the opening where the steps came up in the pavement outside. The other entrance, less well preserved, is in the westernmost bay. Three of the recesses on the north side have traces of windows to the street, high up, wide-splayed, with holes for iron bars; the middle bay has no trace of such a window, but the walling here has probably been rebuilt. As regards the present entrances to the cellar, that in the south-west corner is probably modern; that in the south-east corner may be older, if not original, and may well have been made to supply a direct connexion with the easternmost shop above, which was held together with the cellar as early as 1363. Dr. Salter has suggested that at one time each of the five shops above had one bay of the cellar, but there are no traces of separate entrances or staircases in the middle bays, and, as we have seen, the cellar seems to have been let as a whole, from 1363 onwards, as a wine tavern. The bracket

(a) which supports the extra rib in the easternmost bay is carved in the form of a crouching figure of a man, and though now mutilated is finely carved. Indeed the whole cellar, like the remains of the hall window above, shows the most beautifully finished workmanship. The original builder, Roger le Mareschal, must have sunk a good deal of capital into the construction of Tackley's Inn, and on the whole the standard of such domestic building seems to have been much higher during the Middle Ages than in the 17th or 18th centuries, when rebuilding was often left to tenants, with less capital and less permanent interest.

(ii) The southern part of the building formed the academic hall; it looked on to a courtyard at the back, and was approached from the street by a passage or 'entry' between two of the shops. The entry has now disappeared, being absorbed into the Oriel Restaurant, but it can be seen in the plan of this and neighbouring houses made in 1814.¹ The academic hall as originally built was extremely simple in plan. The western half consisted of a large hall, no doubt the refectory or dining hall, about 33 ft. long by about 20 ft. wide, and about 22 ft. high to the wall-plate, with an open roof. If it had any other fireplace than a central hearth, this would have probably been on the north side. In the centre of the south side is a tall, wide-splayed window, about 6½ ft. wide on the inside by about 20 ft. high; it consists of two lights in a two-centred head with double chamfered jambs, moulded rear-arch and internal label (marked (d) on plans and section). A drawing reproduced by Skelton c. 1820² shows cusped tracery more elaborate than now exists, but this may have been a conjecture by the artist. There seems no trace of any other window in the south wall. East of the window, in the south-east corner of the hall, was an arched doorway (shown in Skelton's view and on the plan of 1814); and probably the east end of the hall was from the first partitioned off to form a 'screens' passage, leading from the entry to this south-eastern doorway and so out into the court. The rest of the academic hall, lying east of the dining hall and screens, seems to have consisted of a large chamber, about 21 or 25 ft. long by 17 ft. wide, projecting slightly into the courtyard, with a similar chamber above. This part of the building has been much altered in modern times, but the ground floor chamber seems to have had a large splayed window on the south side and another at the south end of its east wall. When the house was first built there were probably only two stories, the first floor chamber having an open roof. Thus the academic hall part of Tackley's Inn would originally have consisted simply of a large open hall, with a two-storied wing adjoining the screens end;

¹ Reproduced in *Oriel College Records*.

² Skelton, *Oxonia Antiqua Restaurata* (2nd ed.), pl. 99; cf. Bodleian MS. Top. Oxon. b. 123, fo. 51; MS. Top. Oxon., 299, fo. 126. There is a photograph of the window and adjoining gable in *Inv. Hist. Mon. City of Oxford* (R.C.H.M. England, 1939), pl. x.

TACKLEY'S INN, OXFORD

this was quite a normal plan for a middling-sized 14th century house. The accommodation thus provided, though roomy, would be very simple, not to say primitive; the earliest Fellows of Oriel must have slept at least four or five in a room. It is quite likely that from the first there were some one-storied out-buildings in the courtyard at the back, to serve as kitchen, promptuary, and so forth. In its general lay-out—namely, a row of shops in front and a large hall and a few chambers at the back—Tackley's Inn must have been typical of a good many larger academic halls in Oxford. It has in fact an exact parallel in another hall acquired by Oriel, St. Mary's Hall. Here there was a similar row of six shops towards the street, with cellars below (the shops surviving until the building of the present Rhodes Building in 1909), while at the back lay the house or hall, which had originally been the rectory house or manse of St. Mary's; part of this hall consisted of a large hall or refectory which, Wood tells us, served as the dining hall of St. Mary's Hall until 1639, when the existing hall in the south-east corner of the quadrangle was built.¹

When we turn to consider the subsequent development of the building, we must remember that at some time before the middle of the 15th century it was divided into two tenements: (1) Buckley Hall, to the west, and (2) the tavern, to the east, the two being separated by the entry or screens passage. (1) Buckley Hall thus consisted chiefly of the great hall or refectory of the original house, together with the three adjoining shops, with the rooms above them, to the north. At some time in the 15th or early 16th century the great hall was given a new roof of three bays, of the collar-beam type, which still survives; the two western bays formed an open roof to the great hall below, and the truss separating them is formed into an arch by means of moulded braces (marked (*e*) on sections). The roof has the appearance of 15th century work; but the college accounts (surviving from 1451 onwards) do not show any large outlay on Buckley Hall except some unspecified repairs in 1480-1, whereas, on the other hand, some extensive reconstruction was done in 1512-13 and 1513-14. A contract was then made with a carpenter, Robert Carrow, *pro edificacione aule de Bucley*; He received sums amounting to £5 13s. 4d.; there are payments *pro vectura veterum lignorum ab ipsa aula et novorum pro eadem*, and to a mason repairing a wall in the hall, and there was also extensive tiling done. Altogether, it looks as though the existing roof may have been put in about 1512-14; alternatively, these items may possibly refer to some reconstruction of the northern part of the tenement, *i.e.* the shops and the rooms over them. I have said that the two western bays of the roof were open to the hall below; the third or easternmost bay was at some time partitioned off to form a small room on the first floor

¹ *Oriel College Records*, pp. 72, 158, 382, 384-5. Antony Wood, *History and Antiquities of the Colleges and Halls in the University of Oxford* (ed. J. Gutch), p. 674.

above the screens passage (E on first floor plan), and this may have been done at the time that the roof was reconstructed (c. 1512-4 ?); the form of the roof timbers seems to suggest that. By the beginning of the 17th century another room had been added, immediately above, on the second floor, which projected from the hall roof like an enormous dormer window (E on second floor plan). The characteristic Jacobean gable of this projection still survives ((f) on section). The windows of the rooms below have been modernised (sashes inserted), but Skelton's view, together with some surviving traces on the underside of the gable, shows that the second floor room had a projecting bay window, like those in the Old Palace, while the first floor room had a three-light stone mullioned window under a square hood-mould, both windows probably being early 17th century work. Antony Wood, writing about 1662-3, says of the great hall, 'the refectory . . . yet standing, resembling those of the modern halls;'¹ this seems to imply that the hall was then still open to the roof, and that the floor-dividing it into two stories was inserted later in the century. The northern part of the house towards the street was entirely rebuilt in the 19th century.

(2) With regard to the development of the eastern tenement, the tavern: here the college accounts show that there were constant improvements and repairs going on, so that while Buckley Hall must have remained comparatively primitive in its accommodation, the tavern was developing into a large house; as we have seen, in the Hearth Tax returns of 1665, Buckley Hall has only two hearths, while the tavern has eight. To begin with the tavern probably consisted of two chambers, one above the other, at the back, and a couple of shops, with rooms above, in front. Later the great central chimney stack, the core of which probably still survives, was built between the front and back parts of the house, and there was probably a spiral staircase, next to the chimney stack, roughly in the position of the modern staircase (c). In 1465-6 a large amount was spent *pro factura caminorum in taberna nostra*, including payments to a mason, a carpenter, and one Robert Mosswell, 'brekman,' for several cartloads of bricks from Brill; this outlay probably represents the building or rebuilding of the central chimney stack. In 1467-8 a carpenter did some repair work *super hostium selarii*, perhaps a reference to the internal way down to the cellar at its south-east corner, or to the way down from the street outside. In 1480, £9 17s. 11d. was spent on repairs to the tavern and Buckley Hall, enough to justify raising the rent of the tavern, as we have seen. Between 1503 and 1509 there was again a good deal of work done, such as the making of windows, the building of chimneys and stairs, and the ceiling of a chamber, which may mean that the upper chamber at the back was having its open roof ceiled in, leaving a

¹ Clark, *Wood's City of Oxford*, I, 145. Wood gives the arms in the hall window: (1) argent, 3 escutcheons azure; (2) gules, 3 fleur de lis or.

TACKLEY'S INN, OXFORD

cock-loft or attic above. It is at any rate likely that these improvements were being made to the back part of the house, for the front part was in the meanwhile becoming so ruinous (the shops of 1320 may have been comparatively flimsy) that in 1514-5 the tenant had to be granted a reduction of rent *pro anteriori parte ruinosa*. Accordingly in 1514-6, Thomas Jenkyns, a carpenter, was employed to rebuild the front part; the old roof was pulled down and its timbers carried off to the college; the new roof was put up, a chimney made (perhaps the north-eastern chimney stack), and two carpenters were employed for twenty days making an 'aqueduct' (gutter), floor, stairs and partitions. Evidence for the later 16th century is lacking. There is a small single-light stone window in the south-west corner of the first floor room at the back ((c) on the plan), which must belong to the early 17th century, as its mouldings are almost identical with those of the Oriel front quadrangle. The ceiling of the back room on the ground floor is supported by stop-chamfered beams (marked (b) on plan and sections), which are probably 16th or early 17th century.

The existing front part of the tavern, consisting of the Oriel Restaurant shop and the two floors and attics above (A, B, on plans), is a timber-framed structure, the skeleton of which may be any date between about 1600 and 1750. There are some points in favour of a late date; notably the fittings, such as the windows and the hipped roof, seem characteristic of the 18th century, and the staircase seems later still. There are plenty of examples in Oxford of such timber-framed houses of the 18th century. On the other hand, the plan of the central chimney stack is not typical of that period; in the typical 18th century Oxford house of this double-breasted plan the fireplaces are placed diagonally, in adjoining corners—there are good examples of this in the upper part of Blackwell's, in the now demolished No. 45, Broad Street¹, and in Nos. 10 and 12, Oriel Street. The plan that we have here, the large rectangular central chimney stack flanked by a staircase, though in this case the stairs are modernized, is typical rather of the house plan of c. 1600, as in so many of the demolished houses in Broad Street; and in this case the chimney stack probably succeeds, and may even incorporate, the medieval stack. Perhaps the solution is that the medieval or sub-medieval central stack was left, but that the timber-framed rooms in front are 18th century work. At some time about the end of the 18th century the second and third floors were added on top of the chambers at the back of the tavern (F on second floor plan).

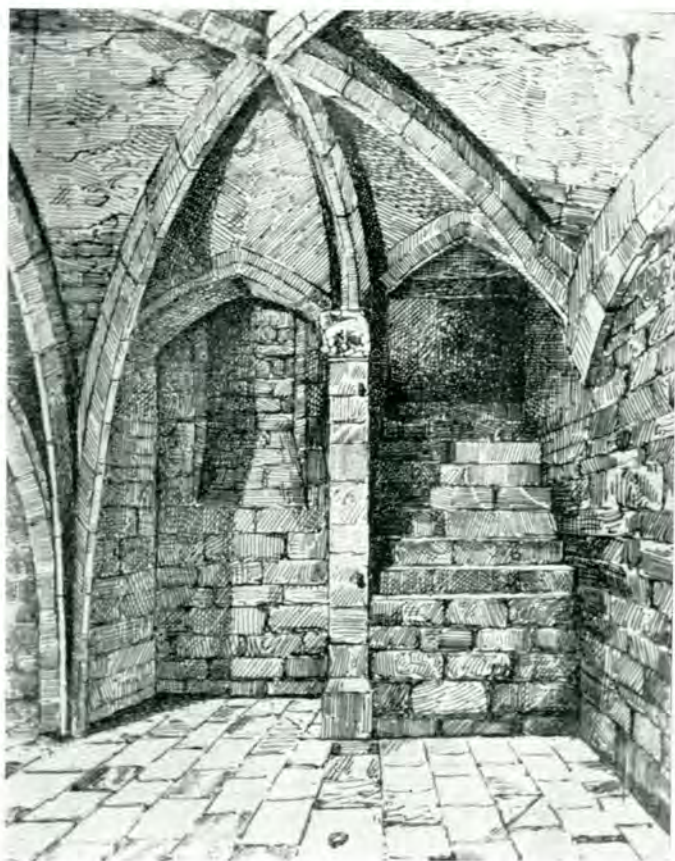
Finally, there is the three-storied south-east wing, added along the courtyard at the back of the tavern (F-I on ground plan). The first floor projects about 1½ ft. beyond the ground floor, with a coved over-hang, and this gives the building at first sight a picturesque and rather archaic look. In fact, however,

¹ *Oxoniensia*, II, 172, 186.

it was probably built about 1700. It is interesting as a late example of a type of extension that was popular in large Oxford houses in the 17th century; a long narrow wing was built down one side of a courtyard, one room thick, with one or more dog-legged staircases at intervals, the whole plan being much like a series of college staircases. Examples of this are the back wings of Drogheda Hall and of No. 86, High Street, Kemp Hall, and, to a certain extent, the Old Palace. This back wing of the tavern, however, seems to represent rather a degenerate form of the plan, for it lacks the staircase which is characteristic of the older examples.

Tackley's Inn, when properly scrutinized, can be seen to be of far greater interest, historically and architecturally, than might at first sight appear. Like so many old houses in Oxford, it gives us very vividly a cross-section of the various elements, the men, the classes, the movements, that have gone to make up Oxford since the 14th century. There is first of all the original Tackley's Inn, the sound investment of a country parson, with its row of shops occupied by the taper-maker and the candlestick-maker, and its vaulted wine tavern below—all the busy life of the town; while behind, in a little backwater, lie the hall and chambers, inhabited 'after the manner of scholars' by the first Oriel men. No less characteristic are the later vicissitudes of the building, now divided between learning and liquor; in the one half, Master Buckley and his grammar hall, almost the last of its kind; in the other half, Master Unton coming over from Wadley to be entertained at the college tavern; and then Garbrand Harkes, the Dutch bookseller, selling books and wine—*Hinc lucem et pocula sacra*, to quote the old device of the Cambridge University Press. Such a building, then, deserves study, respect, and preservation; and in particular the vaulted cellar and the remains of the great hall would seem worthy of a careful restoration.

It remains to say a word about the plans. I have to thank Mr. P. S. Spokes and several members of the O.U. Archaeological Society for help in taking measurements, and the tenants of the premises for giving every facility and help. In making these plans I have tried to indicate as far as possible the dates of the various parts of the building, as surviving. This can be done with fair accuracy in the case of architectural features like the vaulted cellar or the window and roof of the hall; but any attempt to diagnose walls and masses of masonry which have lost whatever original architectural features they had must necessarily be quite conjectural. Under these circumstances it is particularly difficult to distinguish between medieval work and what may be called sub-medieval work—work of the late 16th and 17th centuries. Thus, for instance, the thick eastern boundary wall with its great chimney stacks (which I have marked as medieval) might be almost any date between about 1300 and about 1700.



TACKLEY'S INN, OXFORD.

North-east corner of early 14th century vaulted cellar (p. 87)

*Reproduced from a pen drawing by H. Hurst, (1893),
now Bodleian MS. Top. Oxon. c. 313, p. 365, by
permission of the Curators of the Bodleian Library.*